



Santa Barbara South  
Coast Chamber State  
of the County 2023

**Santa Barbara County  
1<sup>st</sup> District Supervisor  
Das Williams**

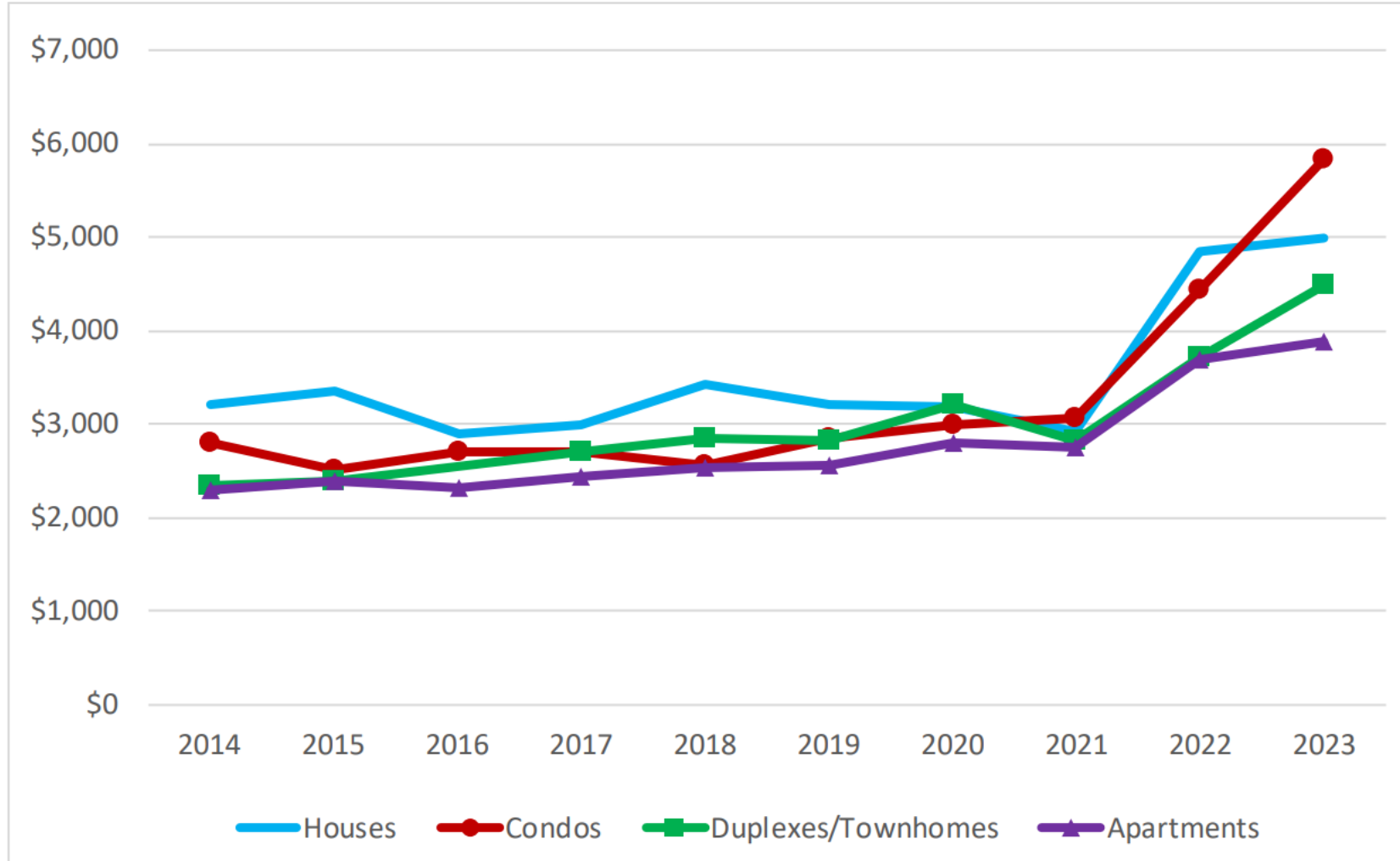


one  
COUNTY  
one  
FUTURE

COUNTY of  
**SANTA BARBARA**

# Housing

**Figure 3-3: South Coast Median Rent for Two-Bedroom Units, by Housing Type, 2014-2023**

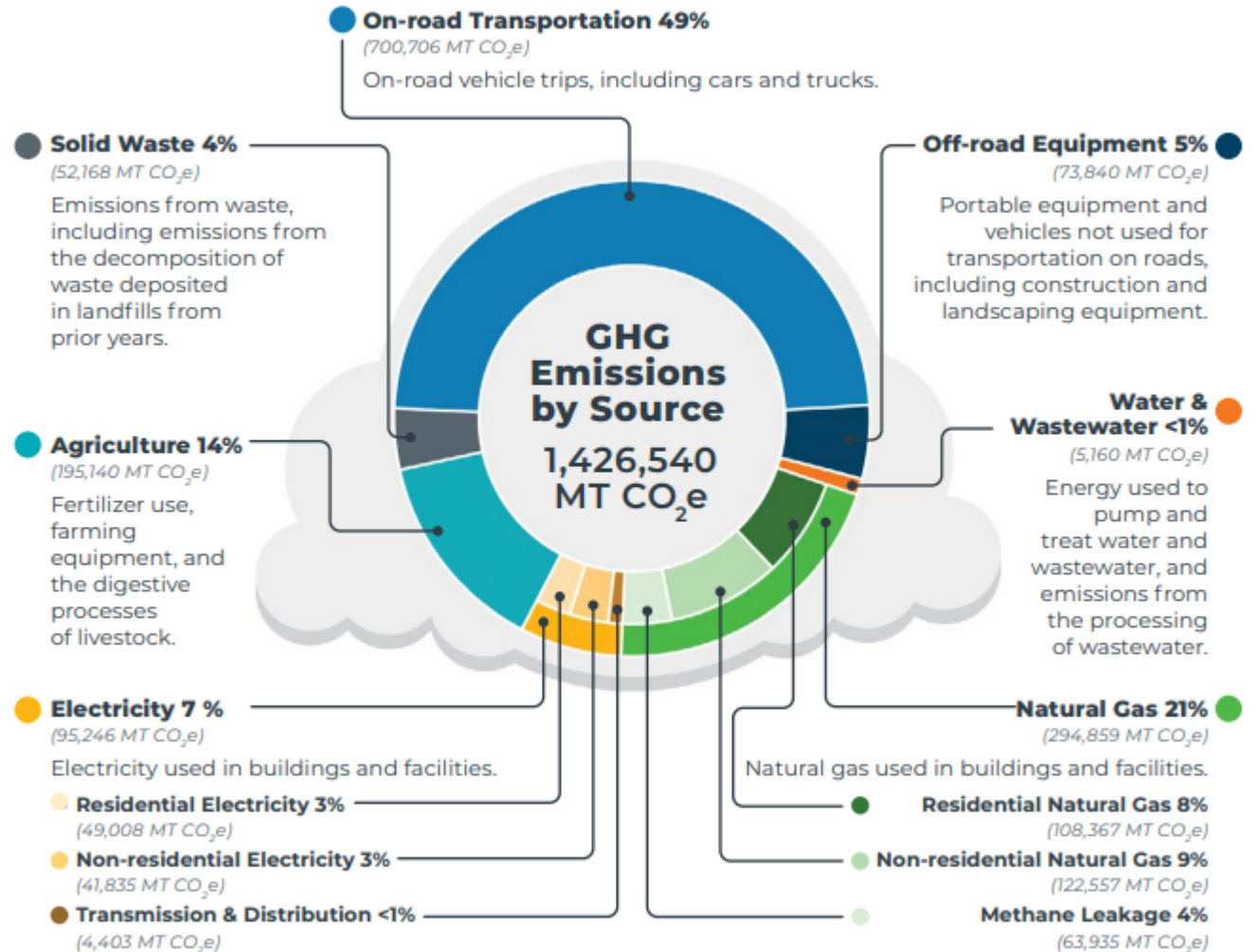


Niehaus, City of Santa Barbara Rent Survey for the South Coast

# Greenhouse Gas Reduction

- ▶ June 27<sup>th</sup>: Board of Supervisors directed staff to retain the previously adopted goal to reduce unincorporated County GHG emissions 50% by 2030 (below 2018 baseline levels).
- ▶ Staff are working with the Climate Action Plan (CAP) technical consultant to identify the necessary modifications to meet this goal.
- ▶ County cannot achieve its goals without collaboration with regional agencies, cities, non-profit organizations, businesses, and individual community members.

FIGURE 3. 2018 Unincorporated County GHG Emissions by Source



# Central Coast Community Energy (3CE) Incentives



- ▶ Commercial customers enrolled in 3CE service related to a commercial, agricultural, non-profit, multi-family housing, or industrial entity as well as public agencies are eligible to apply for the Electrify Your Ride Program and New Construction Electrification Program.
- ▶ **Commercial property owners can apply for up to five EV Incentives, and up to three Project Sites for EV Chargers and EV Readiness incentives.**
- ▶ Electrify Your Ride Program and New Construction Electrification Program also available to residential customers

# 3CE Electrify Your Ride Program



## Vehicle Rebates

Vehicle Type (up to 5 vehicles*)	New (Base)	Used (Base)
Battery Electric	\$2,000	\$1,000
Plug-in Hybrid Electric	N/A	N/A
Electric Motorcycles	\$1,000	N/A

\* Multiple vehicle rebates available to commercial customers only

## Level 2 Charger Rebates

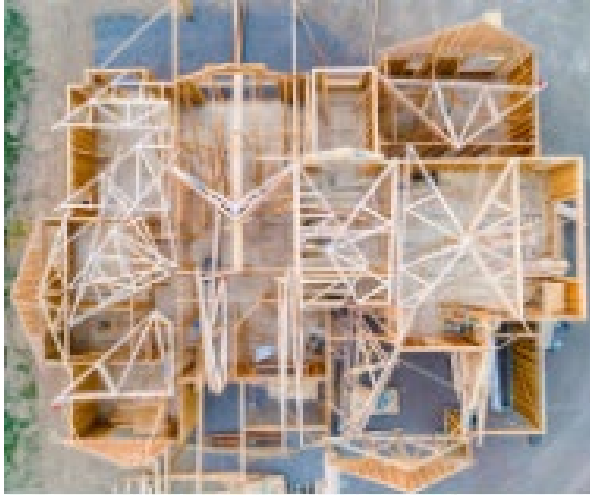
Commercial	Multifamily Housing
75% of equipment cost up to \$3,000	Up to \$10,000

## EV Readiness Rebates

Commercial	Multifamily Housing
75% of the materials and labor cost up to \$5,000	Up to \$10,000

Provides 3CE customers with a “one-stop-shop” for transportation electrification rebates and support. Rebates are available for electric vehicles, Level 2 EV chargers, and EV readiness (electrical work related to charger installation).

# 3CE New Construction Electrification Program



The New Construction Electrification Program provides housing developers and homeowners with incentives to build all-electric housing.

Housing projects must be built to all-electric standards for all energy utility needs including but not limited to water heating, space heating, and cooking appliances.

Incentives are determined on a per unit basis and will be provided “downstream” to developers and homeowners upon successful completion of the project.

## Eligible Housing Projects:

- Affordable Housing Developments - \$2,500/unit, up to \$240,000 per project
- Farmworker Housing - \$2,500/unit, up to \$240,000 per project
- Accessory Dwelling Units (ADUs) - \$5,000/unit, \$10,000 per customer



# Recruitment/Overtime Issues

## Sheriff's Office Overtime Costs



Questions?