



*one*  
**COUNTY**  
*one*  
**FUTURE**

# STATE OF THE COUNTY

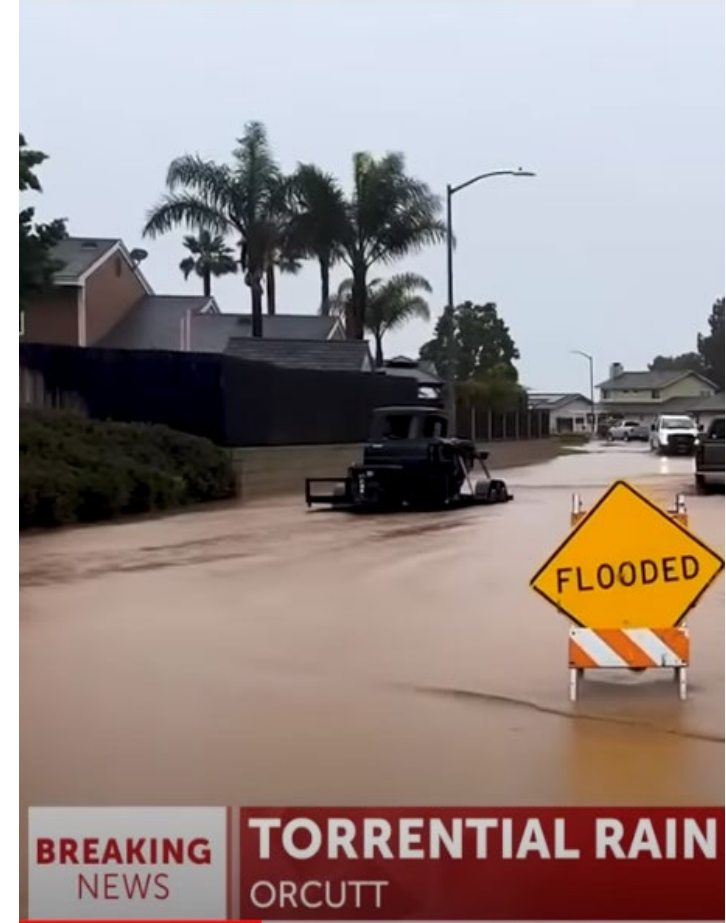
Mona Miyasato, County Executive Officer

**BUCKLE  
UP  
&  
DRIVE  
CAREFULLY**





# A look back at 2023 emergencies thus far...



January 2023 storms prompting evacuations, road closures and creating extensive damage across the County



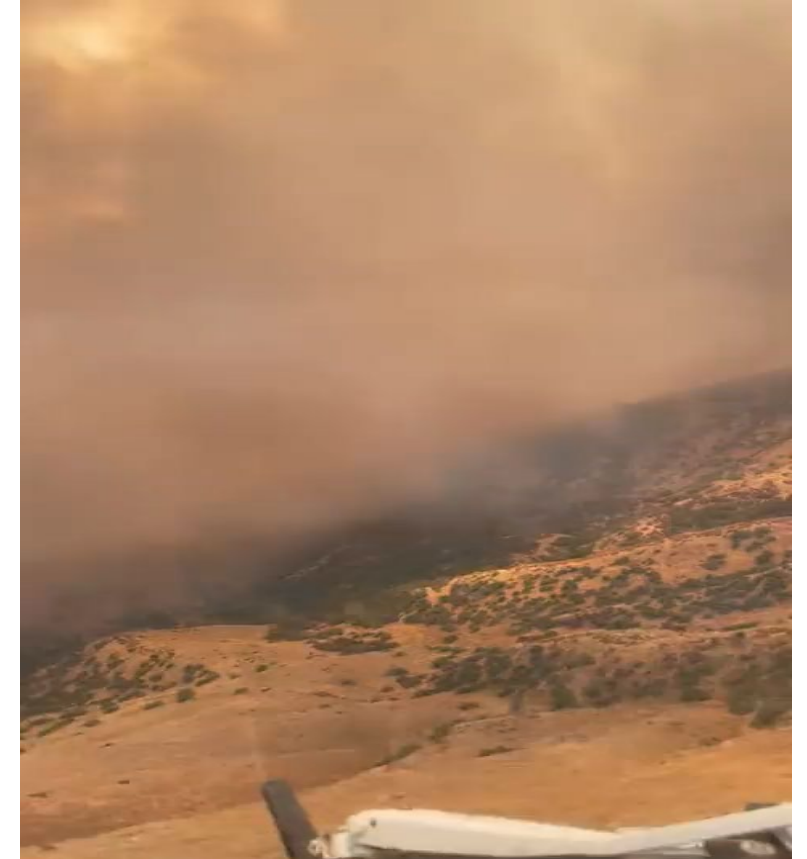
# A look back at 2023 emergencies thus far...



January 2023 storms required removal of debris from basins and assistance from the National Guard



Road leading to Guadalupe Dunes park entrance receives extensive damage following January Storm



August 2023: Fire in New Cuyama prompting evacuations



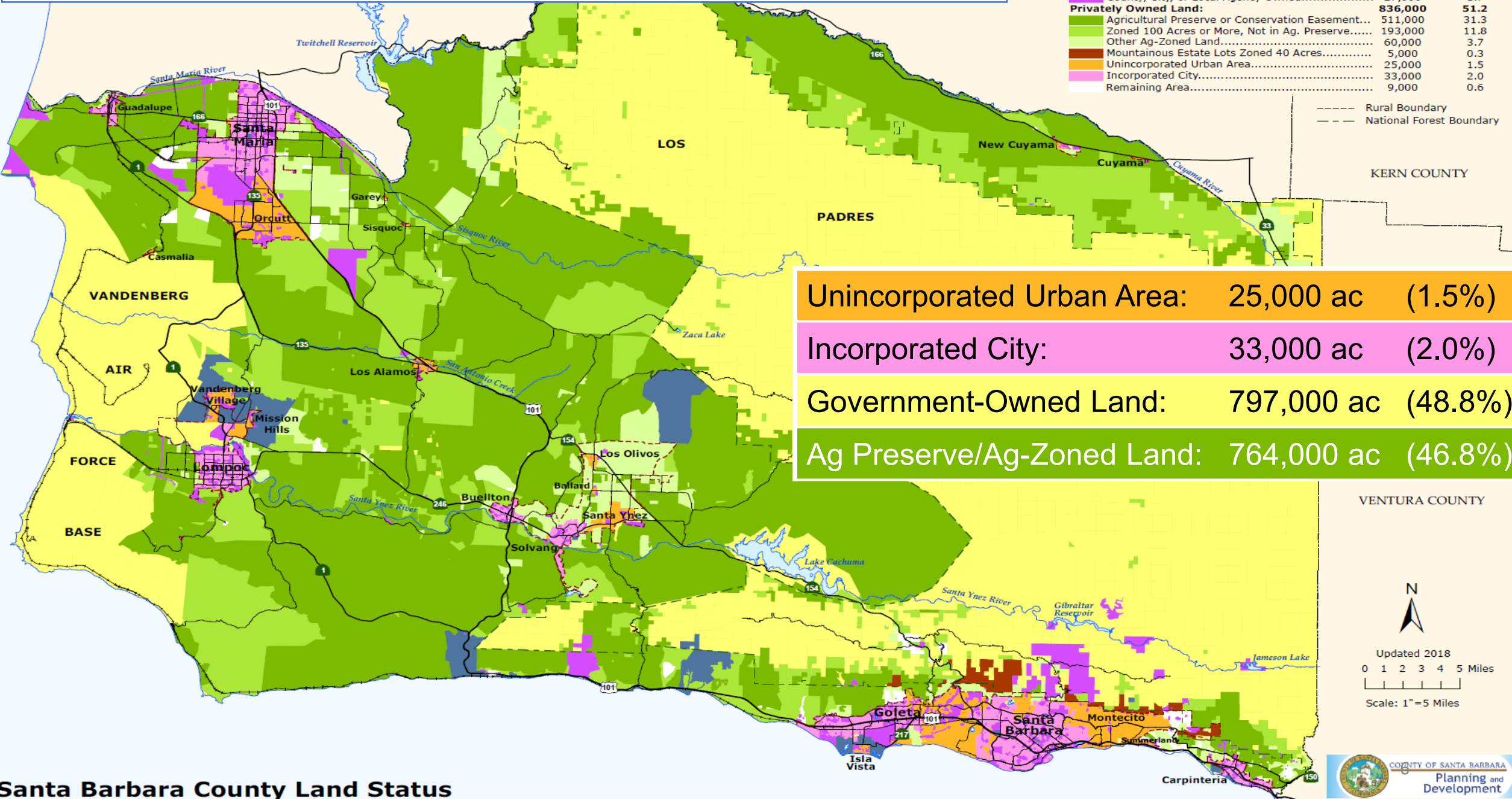


one  
COUNTY  
one  
FUTURE

# COUNTYWIDE INFORMATION



County land is largely agricultural or federally-owned.

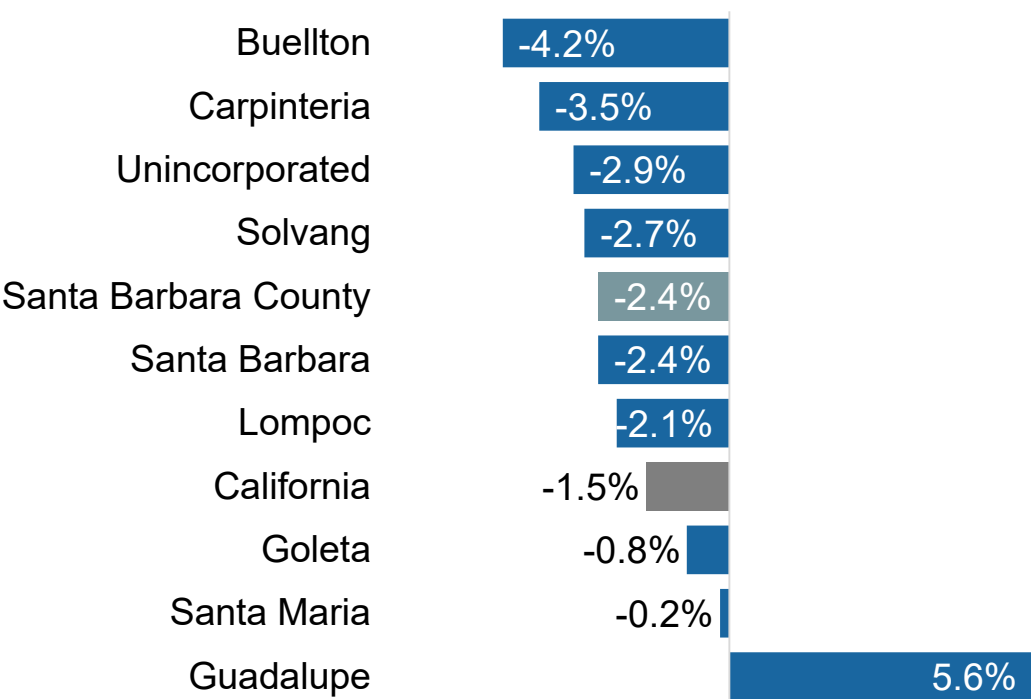


Santa Barbara County Land Status

# Population

<u>City</u>	<u>Est. Population</u> <u>Jan 2023</u>	<u>Percent</u>
Santa Maria	109,477	25%
Santa Barbara	85,418	19%
Lompoc	43,493	10%
Goleta	32,442	7%
Carpinteria	12,711	3%
Guadalupe	8,515	2%
Solvang	5,669	1%
Buellton	4,944	1%
<u>Unincorporated</u>	<u>137,888</u>	<u>31%</u>
<b>TOTAL</b>	<b>440,557</b>	<b>100%</b>

## Population Change | 2020–23

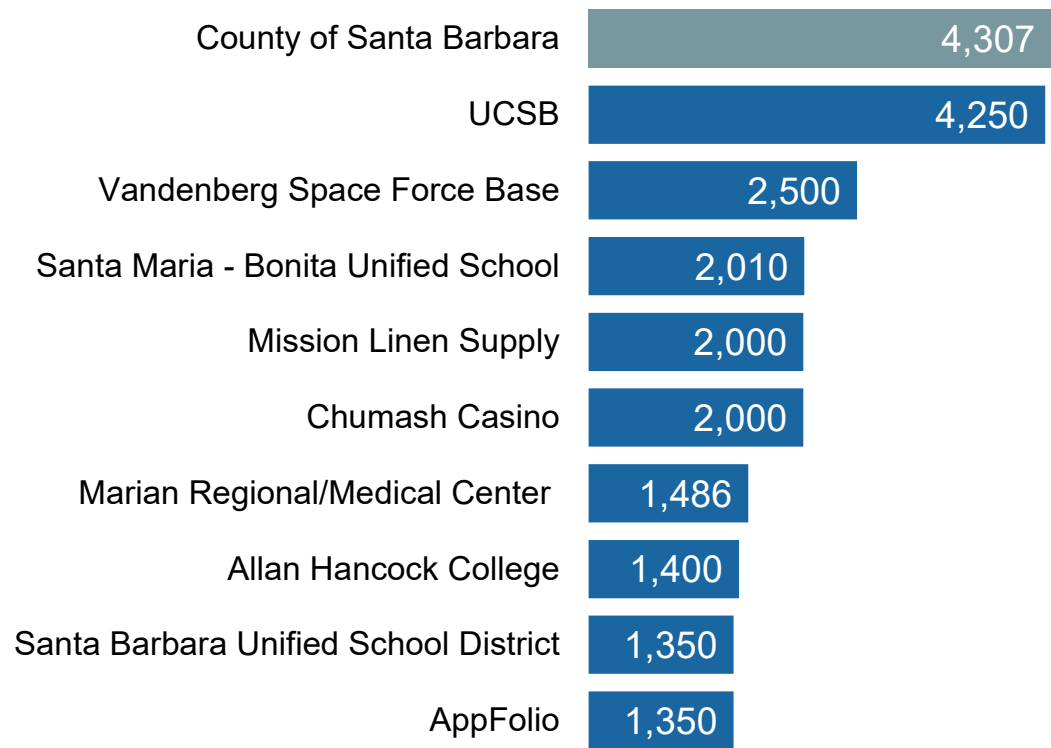


Source: CA Department of Finance

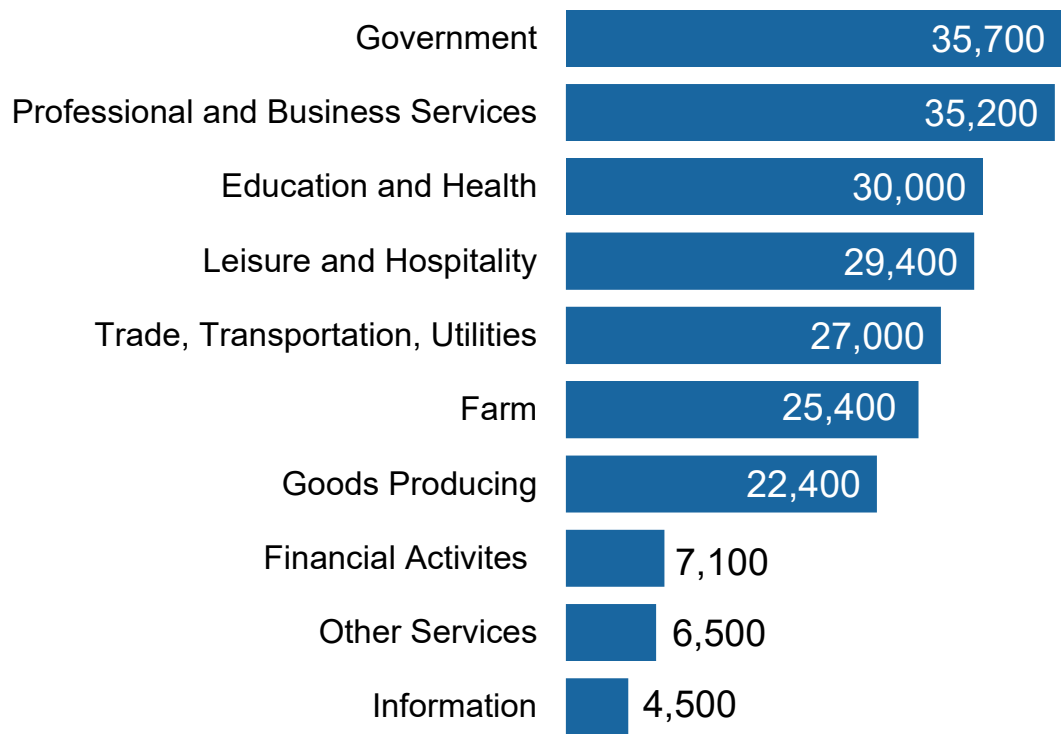
Source: CA Department of Finance

# Employment and Industry Sectors: *Government, Education and Health are largest employers*

Top Ten Employers | June 2022



Jobs by Sector | June 2023

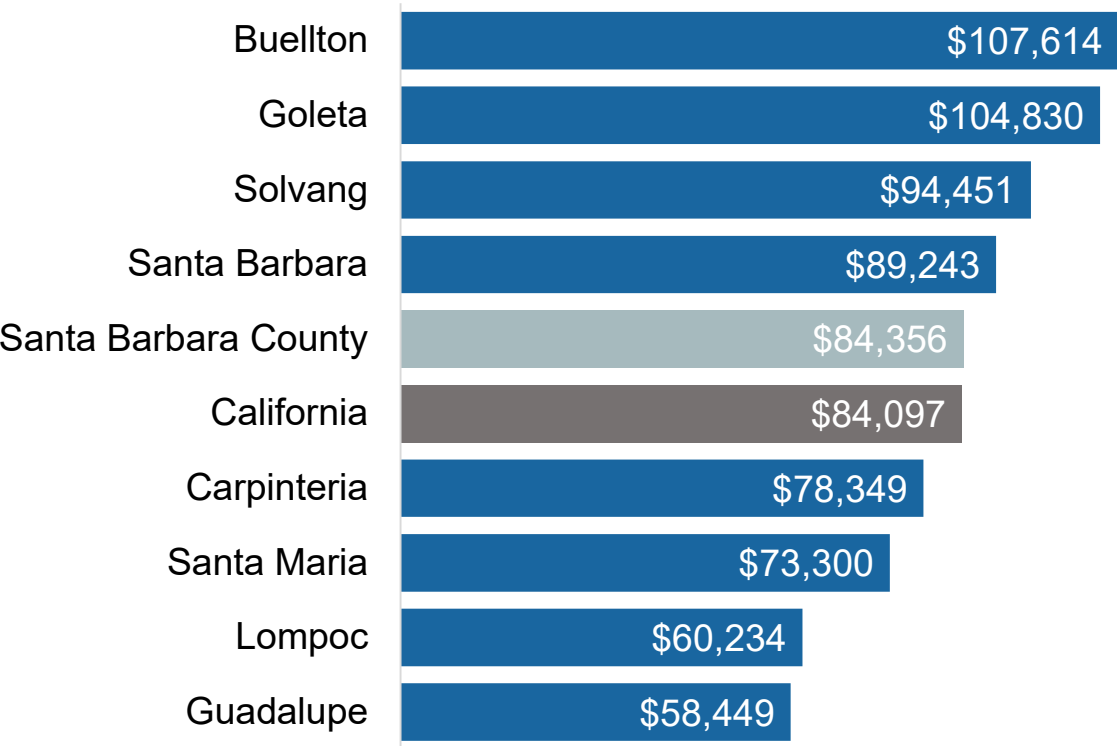


Source: Pacific Coast Times  
Source: CA Employment Development Department  
Source: Labor Market Division, EDD

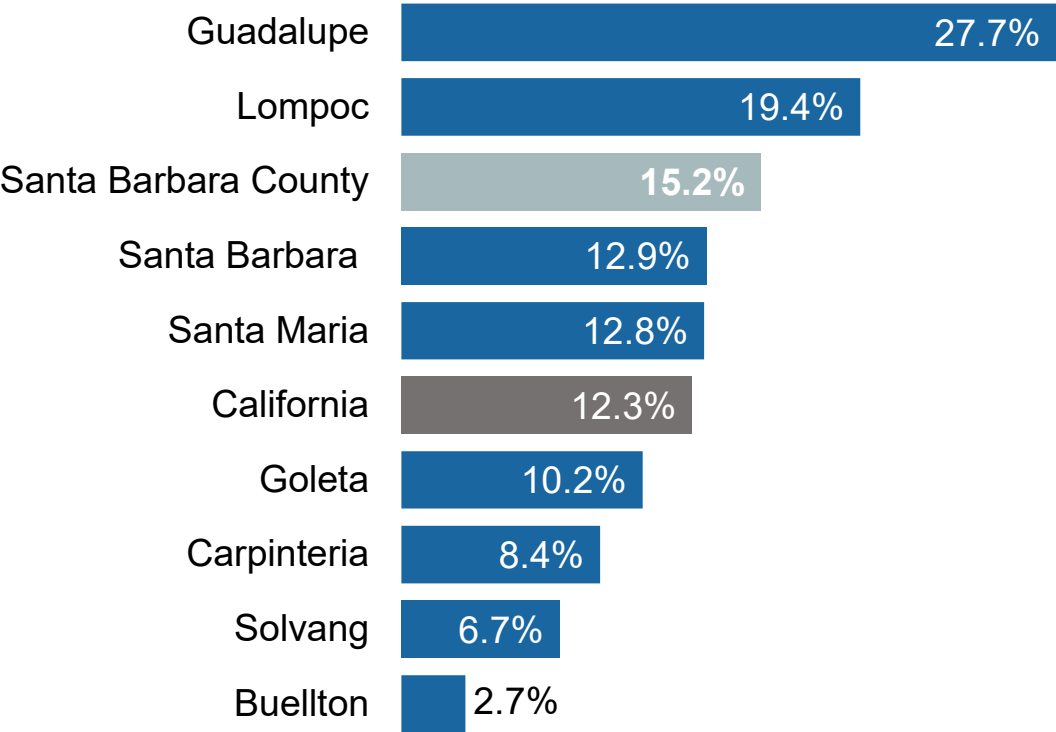


# Income and Poverty: *Comparison to statewide rates*

Median Household Income | July 2022

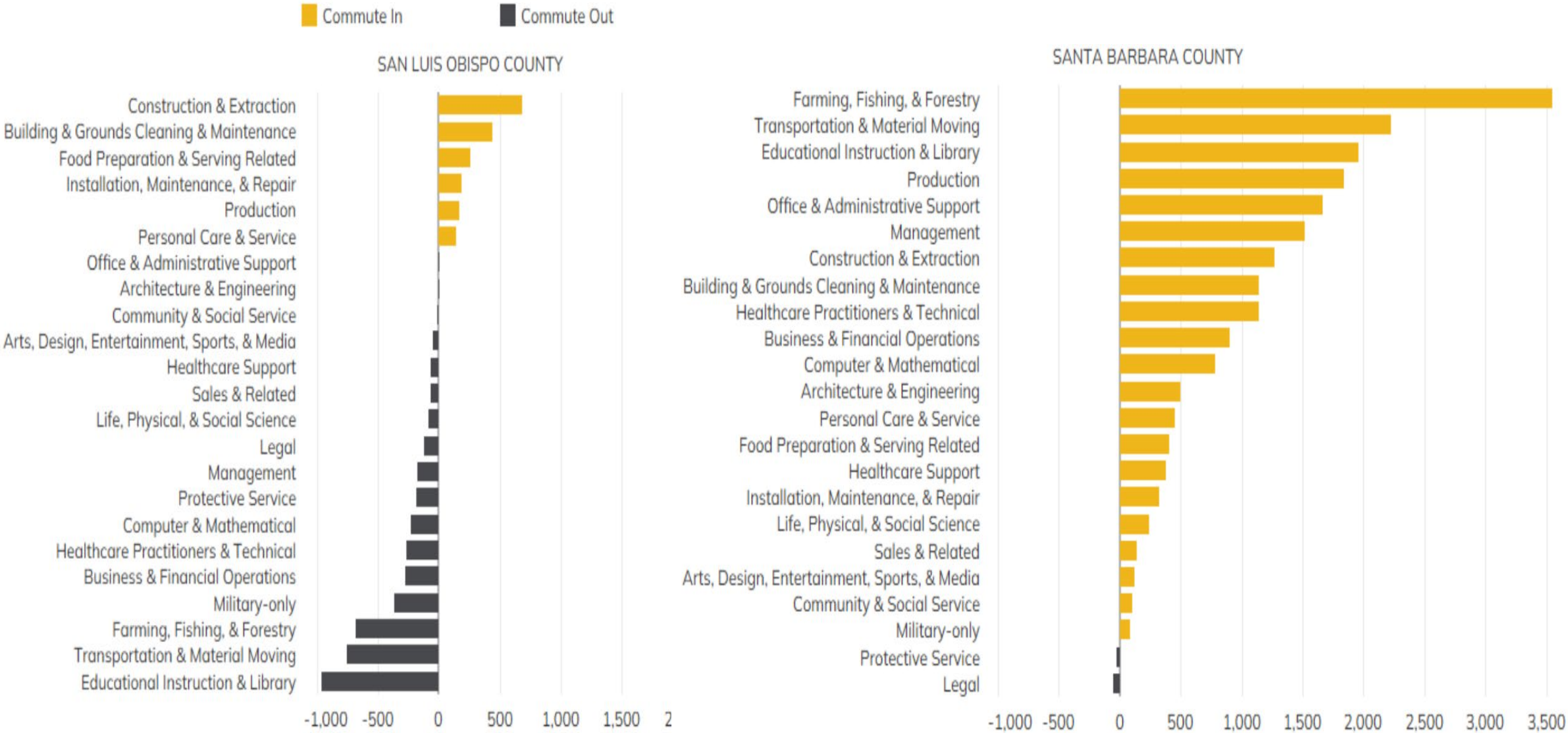


Family Poverty Rate |  
Federal Poverty Threshold (Family of 4 in 2023): \$30,000



Source: United States Census Bureau Quick Facts, 2022

FIGURE 20. NET COMMUTER FLOWS BY OCCUPATIONAL GROUP ON THE CENTRAL COAST, 2021





**FIGURE 14. POPULATION AND HOUSING CHANGES ON CALIFORNIA'S CENTRAL COAST, 1990–2020**

POPULATION				
	1990	2020	Net Change (numeric)	Net Change (percent)
San Luis Obispo County	217,162	282,424	65,262	30.1%
Santa Barbara County	369,608	448,229	78,621	21.3%
<b>Central Coast</b>	<b>586,770</b>	<b>730,653</b>	<b>143,883</b>	<b>24.5%</b>
HOUSING UNITS				
	1990	2020	Net Change (numeric)	Net Change (percent)
San Luis Obispo County	90,200	123,715	33,515	37.2%
Santa Barbara County	138,149	158,279	20,130	14.6%
<b>Central Coast</b>	<b>228,349</b>	<b>281,994</b>	<b>53,645</b>	<b>23.5%</b>



one  
COUNTY  
one  
FUTURE

# COUNTY GOVERNMENT INFORMATION

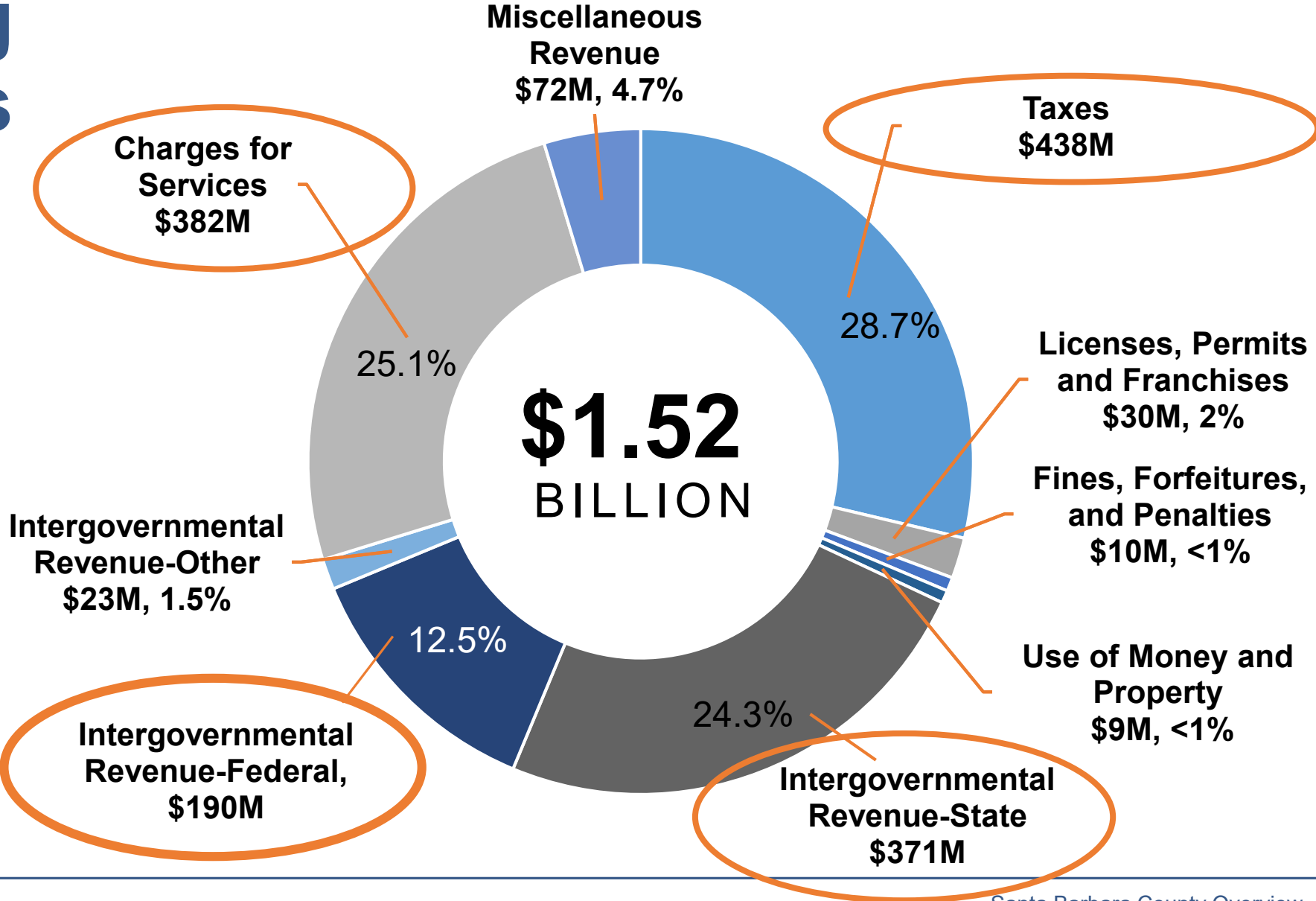




# Operating Revenues

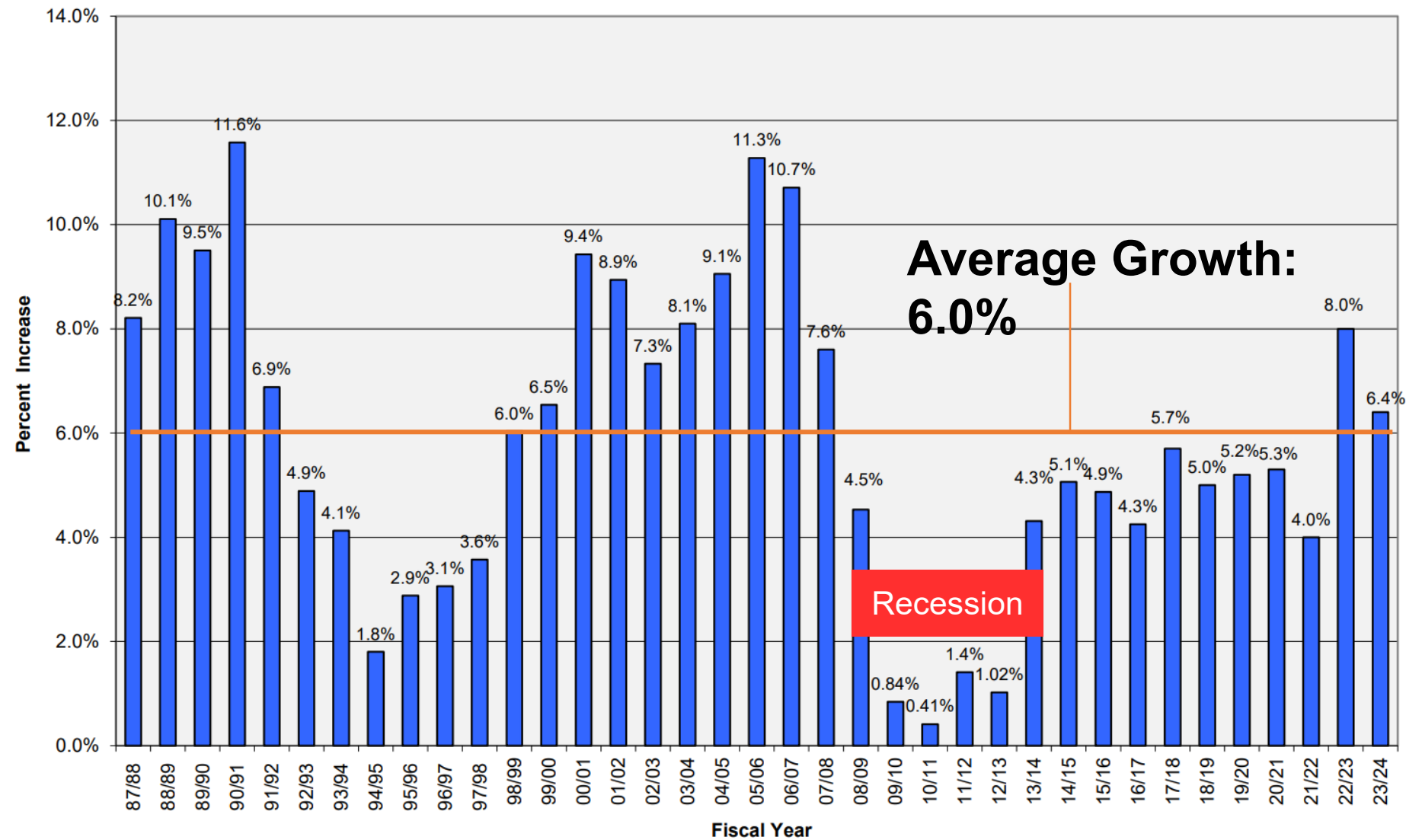
## By Source

*(All Funds)*



# Property Value Increases

Percent Increase in Secured Roll Value  
1987-88 to 2023-24



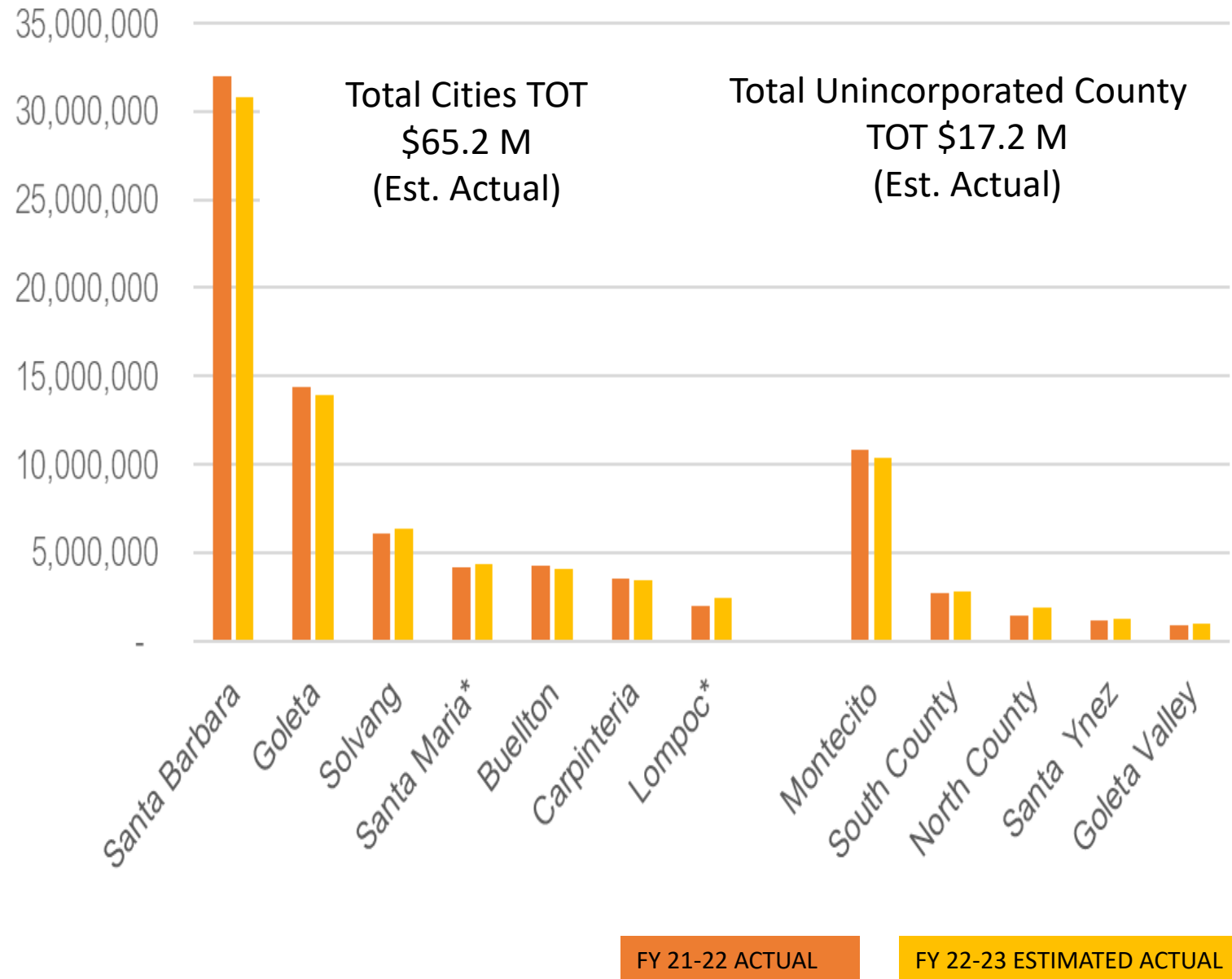
Source: Santa Barbara County Assessor's Division





# Annual Transient Occupancy Tax Summary

Annual Transient Occupancy Tax Summary

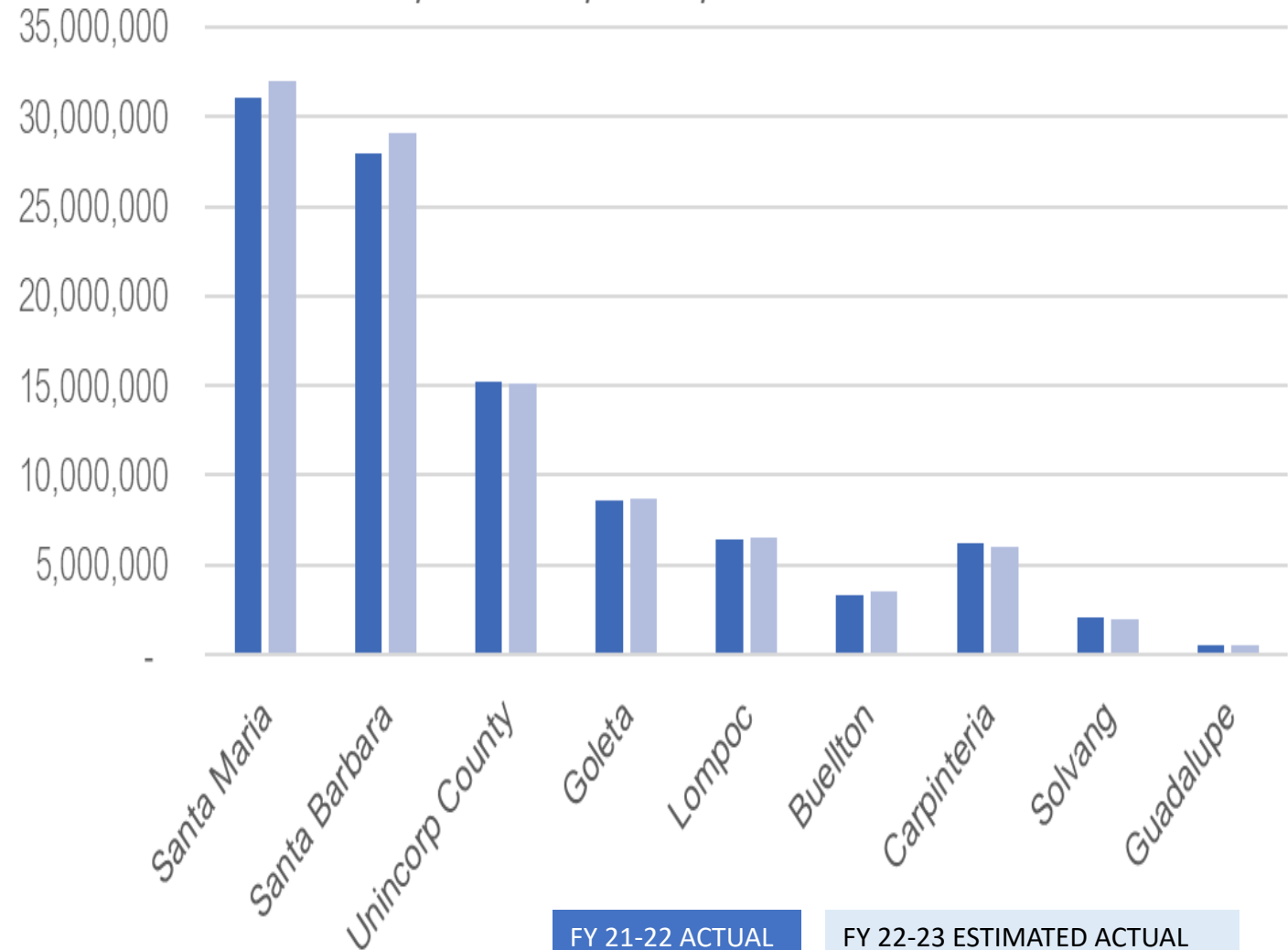


# Annual Sales Tax Summary

## Local Sales Tax Rates

**Santa Maria: 8.75%**  
**Santa Barbara: 8.75%**  
**Unincorporated County: 7.75%**  
**Goleta: 8.75%**  
**Lompoc: 8.75%**  
**Buellton: 7.75%**  
**Carpinteria: 9.00%**  
**Solvang: 8.75%**  
**Guadalupe: 8.75%**

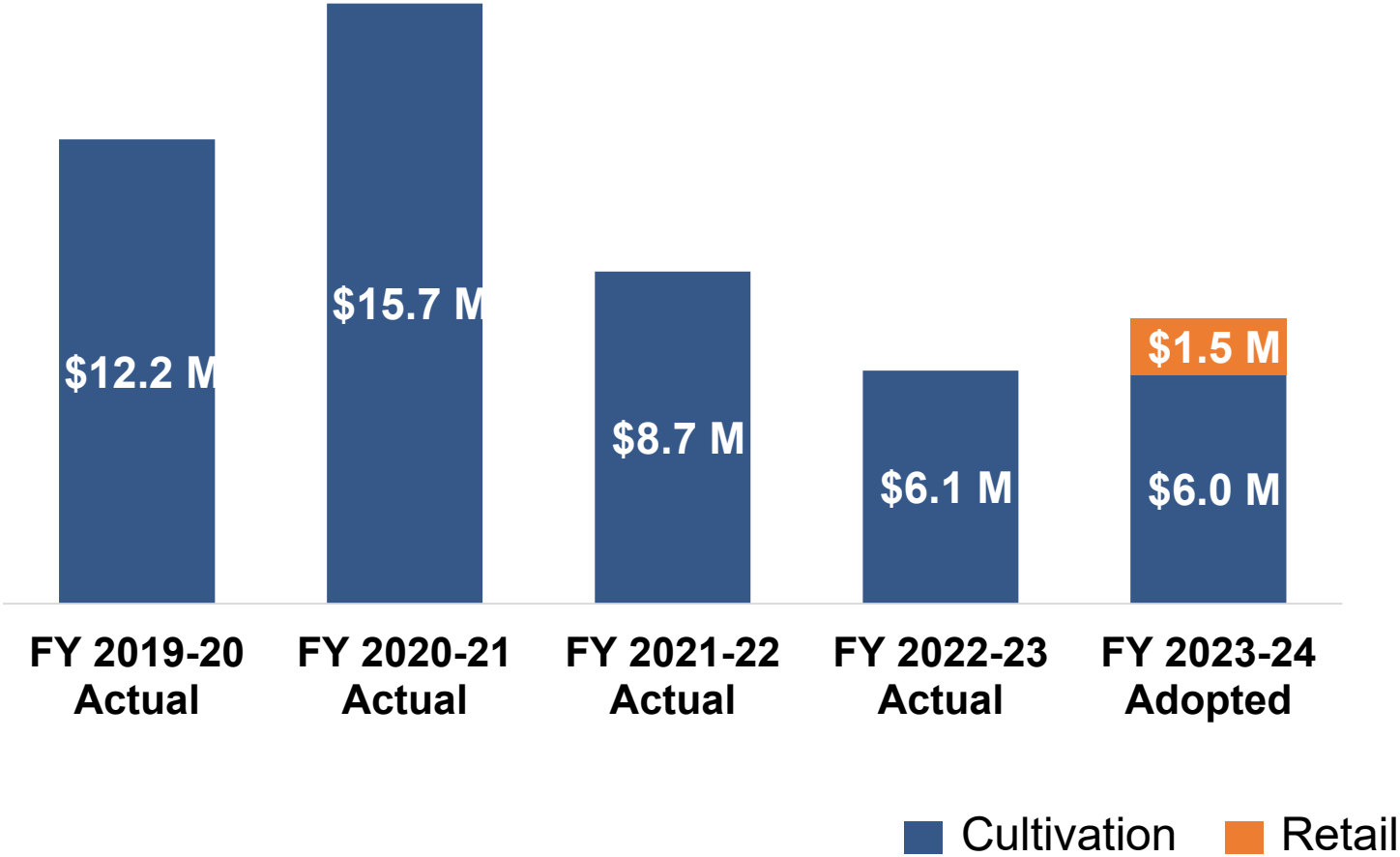
City and County Bradley Burns Sales Tax







# Cannabis Tax Revenue





# Cannabis regulations tightened; revenue continues to contribute to needs







one  
COUNTY  
one  
FUTURE

# MAJOR INITIATIVES





# Economic Development and Broadband

- Comprehensive Economic Development Plan (CEDS) called the Resilience Roadmap
  - + Agtech
  - + Clean tech/renewable energy
  - + Aerospace, defense + precision manufacturing
  - + Technology
- Broadband Access
  - Regional effort
  - Underserved areas
  - Federal funding





# Homelessness and Housing

- **Emergency Housing Vouchers- 272 households**, including families with children now in units
- Veteran homelessness has **dropped 60%** in the last two years
- **Removal/Clearing of 700 active encampments**
  - 289 people relocated to shelter or housing
  - 143 people permanently housed
  - 146 people relocated to interim housing/emergency shelter
- **175+ additional interim housing beds** coming this year!
  - County's Hope Village in Santa Maria
  - La Posada off Hollister in Santa Barbara.

**+12**

**Acute**

Facilities with the highest intensity level of medical and nursing support for patients in periods of acute psychiatric need. (Examples: Psychiatric Health Facility, Las Encinas, Vista del Mar)

**+42**

**Crisis**

Facilities are mixed - some with available medical and nursing short term support to bridge individuals during periods of serious psychiatric crisis. (Examples: 23-hour bed Crisis Stabilization Unit, 30 day Crisis Residential) and emergency shelter placements.

**+139**

**Residential**

A broad range of licensed facilities providing varying service intensity levels and longer-term stays. (Examples: Residential Treatment Facilities, Mental Health Rehabilitation Center (MHRC), Board & Cares)

**+127**

**Permanent Supportive Housing**

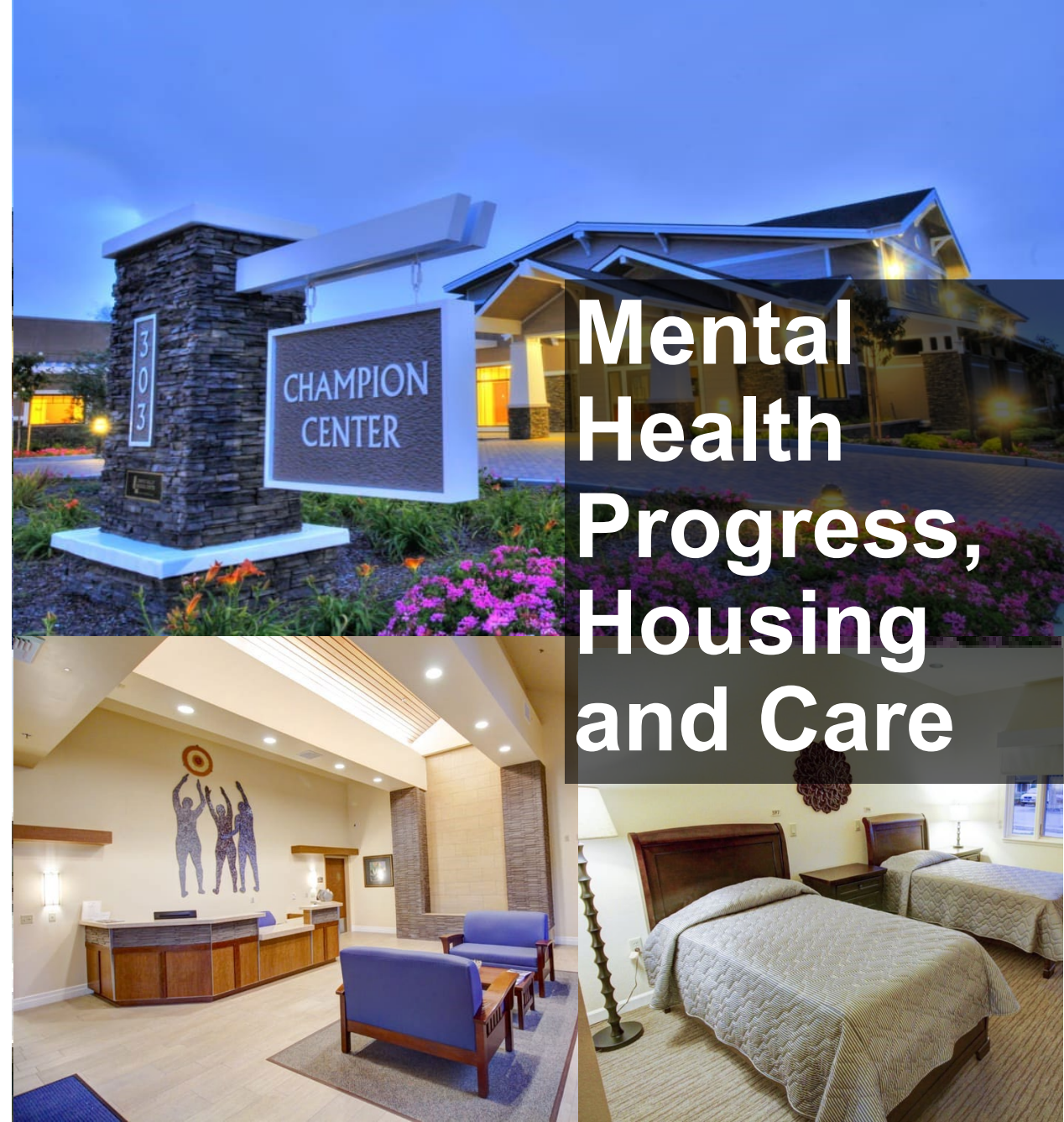
Housing with lower service intensity levels that may provide on-site support for client recovery and independent living skills. (Examples: Depot St. and Pescadero Lofts)

**Total of 112**

**Total of 171**

**Total of 181**

**Total of 53**



# Mental Health Progress, Housing and Care



# Criminal Justice Collaborative Priorities



**Enhance Public Safety by Reducing Recidivism**



**Enhance the use of Alternative Detention**



**Successful & Equitable Reentry**



**Coordinate Efforts & Enhance Efficiency**




**Address Racial and Ethnic Disparities**




# Winter 2023-24: El Niño Preparation and Disaster Readiness






### PREPARE

Emergency preparedness information and resources to help you, your family, and community be ready.



### RECOVERY

Recovery resources and assistance after an emergency.



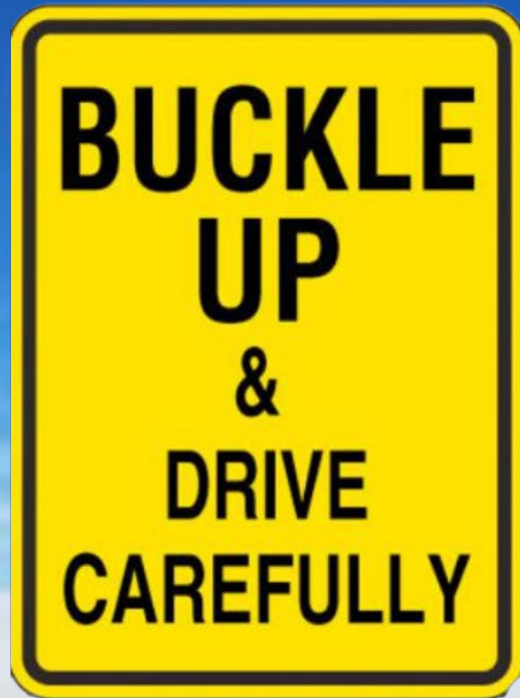
### EMERGENCY

[Click here for the latest Information during an active emergency.](#)

# READY SBC.org

SIGN-UP • PLAN • UNDERSTAND





*Ready for*  
**TODAY**  
*Preparing for*  
**TOMORROW**

*Ready for*  
**TODAY**  
*Preparing for*  
**TOMORROW**





*one*  
COUNTY

*one*  
FUTURE

# STATE OF THE COUNTY 2023